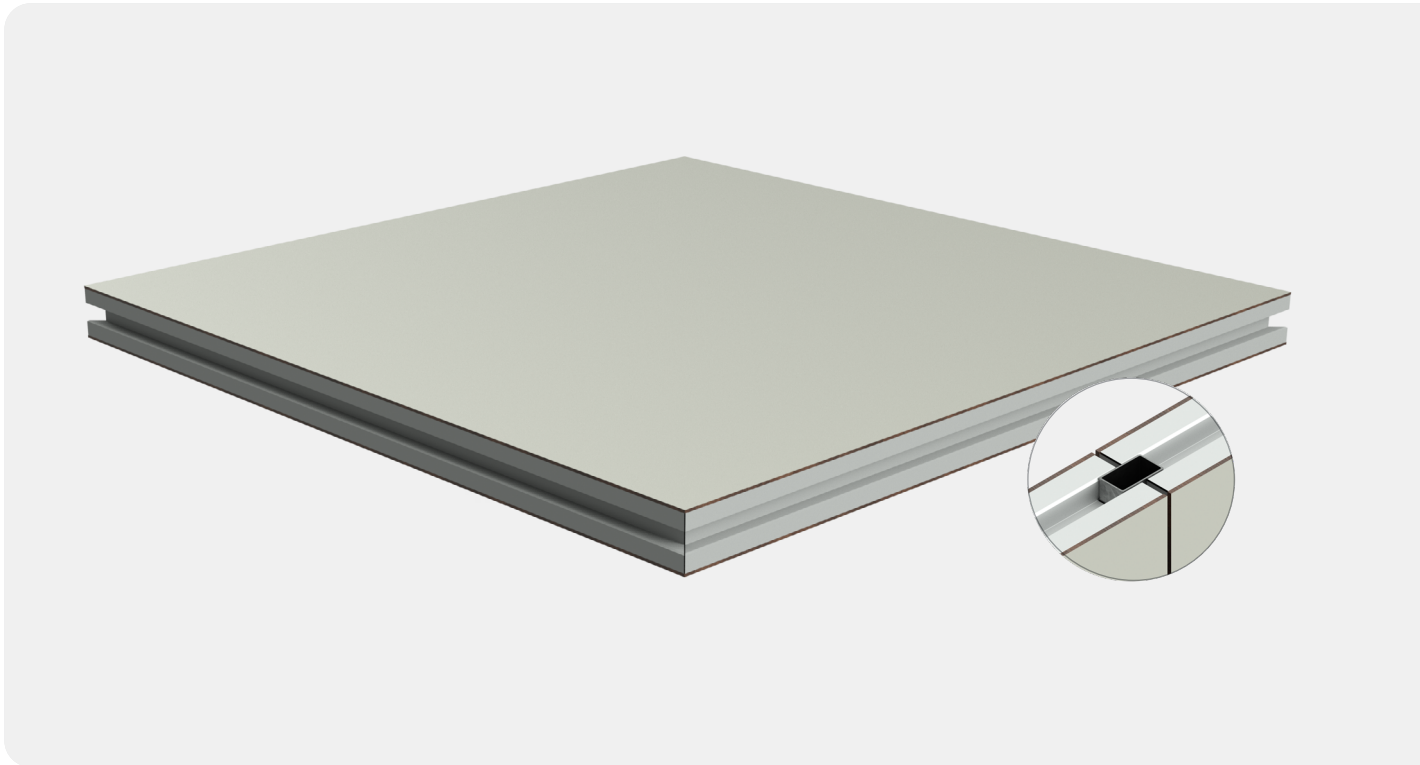




# Panel-Est Honey Alu

Panel with aluminium honeycomb core and aluminium profile



- The honeycomb core is made of aluminium, making it extremely lightweight. The Panel-Est Honey Alu incorporates an aluminium edging profile at the joints, offering good compressive strength and high durability.
- The high performance of Panel-Est Honey Alu, such as its lightness, rigidity and durability, make it an ideal panel for the construction of walls in clean rooms.



invespanel

# Panel-Est Honey Alu



## Description and applications

- Sandwich panel with an aluminium honeycomb core and 3 mm phenolic resin (HPL) facings.
- The panel, which incorporates an aluminium frame profile, has been designed for use in walls in cleanrooms, laboratories, research centres, the pharmaceutical sector, etc.
- A lightweight panel with excellent mechanical strength.



## Technical specifications



<b>Standard dimensions (width x length) <sup>(1)</sup></b>	1,290 x 3,040 mm
<b>Core</b>	Aluminium honeycomb
<b>Core density</b>	27 kg/m <sup>3</sup>
<b>Panel thickness (mm)</b>	60
<b>Own weight <sup>(2)</sup> (kg/m<sup>2</sup>)</b>	10,64

(1) Non-standard sizes available on request.

(2) Based on 3 mm thick resin (HPL) panels with a two sided bevelled edge.

# Panel-Lab Honey Alu



## Components

### Insulating core

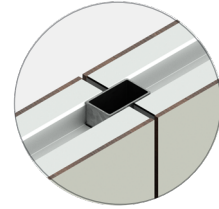
- Aluminium honeycomb with a density of 27 kg/m<sup>3</sup>.

### External faces

- 3 mm thick, fire-retardant thermosetting phenolic resin (HPL) sheets.

### Aluminium profile

- Aluminium profile edging on all four edges of the panel. The profile allows support profiles for walls and ceilings to be housed inside it.



## Finishes

### Profiling option

- Smooth finish.

### Colours

- Standard colours: Polar White, Baikal, Alpine, Tropical Blue, Opal, Folkstone. Please enquire about the availability of other colours.

### Coating

- The phenolic resin surfaces are coated with treatments that improve their reaction to fire and moisture.

## Certificates and applicable regulations

### Raw material application regulations

- EN 438-4:2016 standard for the manufacture of high-pressure decorative laminates (HPL).



Download the latest version by scanning the QR code or by clicking [here](#)

Kingspan | Invespanel is a trademark of Teczone Española S.A.U., and reserves the right to modify the contents of this document without any prior warning. Every effort has been made to ensure that the content of this publication is accurate, but Teczone Española S.A.U. and its affiliated companies are not responsible for errors or information that may be misleading. Suggestions regarding the final use or application of the products or work methods are merely informative and Teczone Española S.A.U. and its affiliates do not accept any responsibility in this regard.

### Kingspan | Invespanel

Pol. Buicio, Sector 6 Nave 4  
E - 26360 Fuenmayor (La Rioja)  
T: +34 941 450 923  
E: [info@invespanel.com](mailto:info@invespanel.com)  
[www.invespanel.com](http://www.invespanel.com)

