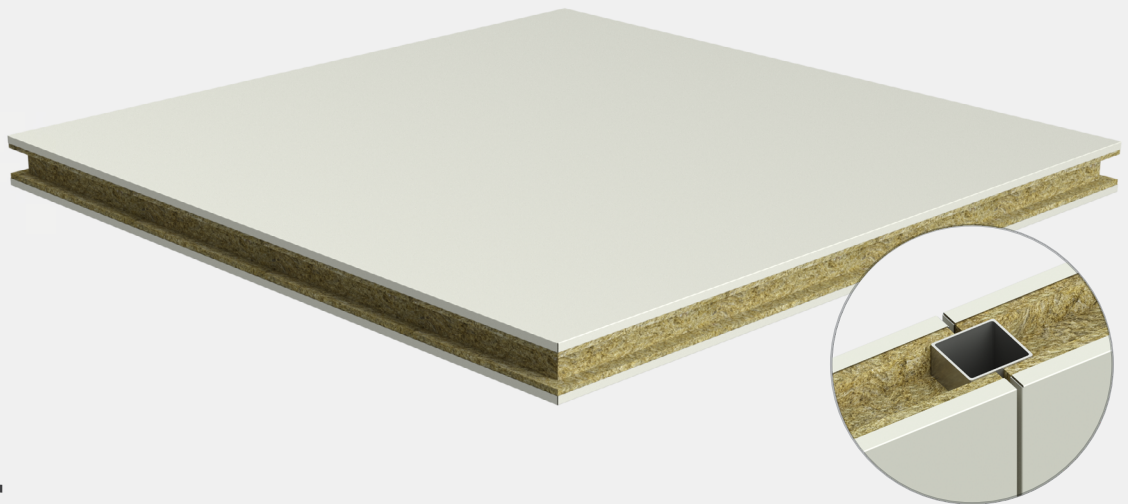


Panel-Lab Roc

Mineral wool core panel



CE

- The mineral wool core of the Panel-Lab Roc insulation board is lightweight, with good compressive strength, high thermal and acoustic insulation and high durability.
- The high performance of Panel-Lab Roc, such as its lightness, rigidity and durability, make it an ideal panel for the construction of enclosures in clean rooms.



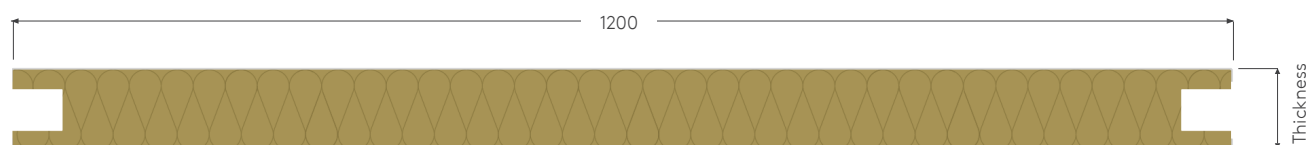
invespanel

Description and applications

- Sandwich panel with mineral wool core, with two possible densities, and 0.5 and/or 0.6 mm steel faces.
- Wide range of highly durable coatings, adapted to the environment in which the panel will be installed.



Technical features



Useful width		1,200 mm							
Manufacturing length		1.8 to 12.5 m							
Insulating core		Mineral wool LD: 130 kg/m ³ Mineral wool HD: 150 kg/m ³							
Panel thickness (mm)		25	30	40	50	60	80	100	120
Dead weight ⁽¹⁾ (kg/m ²)	LD core	-	-	13.38	14.73	16.03	18.63	21.23	23.83
	HD core	11.91	12.66	14.16	15.66	17.16	20.16	23.16	26.16
Thermal transmittance ⁽¹⁾ (W/m ² .K)	LD core	-	-	0.85	0.70	0.59	0.46	0.37	0.31
	HD core	1.32	1.14	0.89	0.73	0.62	0.48	0.39	0.33

(1) Considering sheet thickness 0.5/0.5 mm (ext./int.).

Certifications and applicable regulations

Reaction-to-fire classification

- The Panel-Lab Roc panel has the reaction to fire classification A2 - s1, d0 according to EN 13501-1:2018 (Euroclasses).

Product certifications



CE mark according to EN 14509:2013.

Implementing regulations raw material

- Hot-dip galvanised sheet metal according to EN 10346 and organic coatings according to EN 10169.

Components

Insulating core

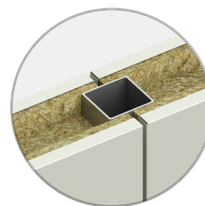
- Mineral wool with density 130 kg/m² (LD) or 150 kg/m² (HD).

Types of steel

- S220GD
- A304 stainless steel

Rebated joint

- Rebated joint that allows wall or ceiling support profiles to be housed inside.



Finishes

Available coatings

- PS lacquer 25 microns, Granite HDX 55 microns, PET 50 microns, Z275 galvanised.

Customisable panel edges

- Execution of folded edges on two, three or four edges of the panel.

Profiling option

- Flat finish.



Download the latest version by scanning the QR code or by clicking [here](#)

Kingspan | Invespanel is a trademark of Teczone Española S.A.U., and reserves the right to modify the contents of this document without any prior warning. Every effort has been made to ensure that the content of this publication is accurate, but Teczone Española S.A.U. and its affiliated companies are not responsible for errors or information that may be misleading. Suggestions regarding the final use or application of the products or work methods are merely informative and Teczone Española S.A.U. and its affiliates do not accept any responsibility in this regard.

Kingspan | Invespanel

Pol. Buicio, Sector 6 Nave 4
E - 26360 Fuenmayor (La Rioja)
T: +34 941 450 923
E: info@invespanel.com
www.invespanel.com

