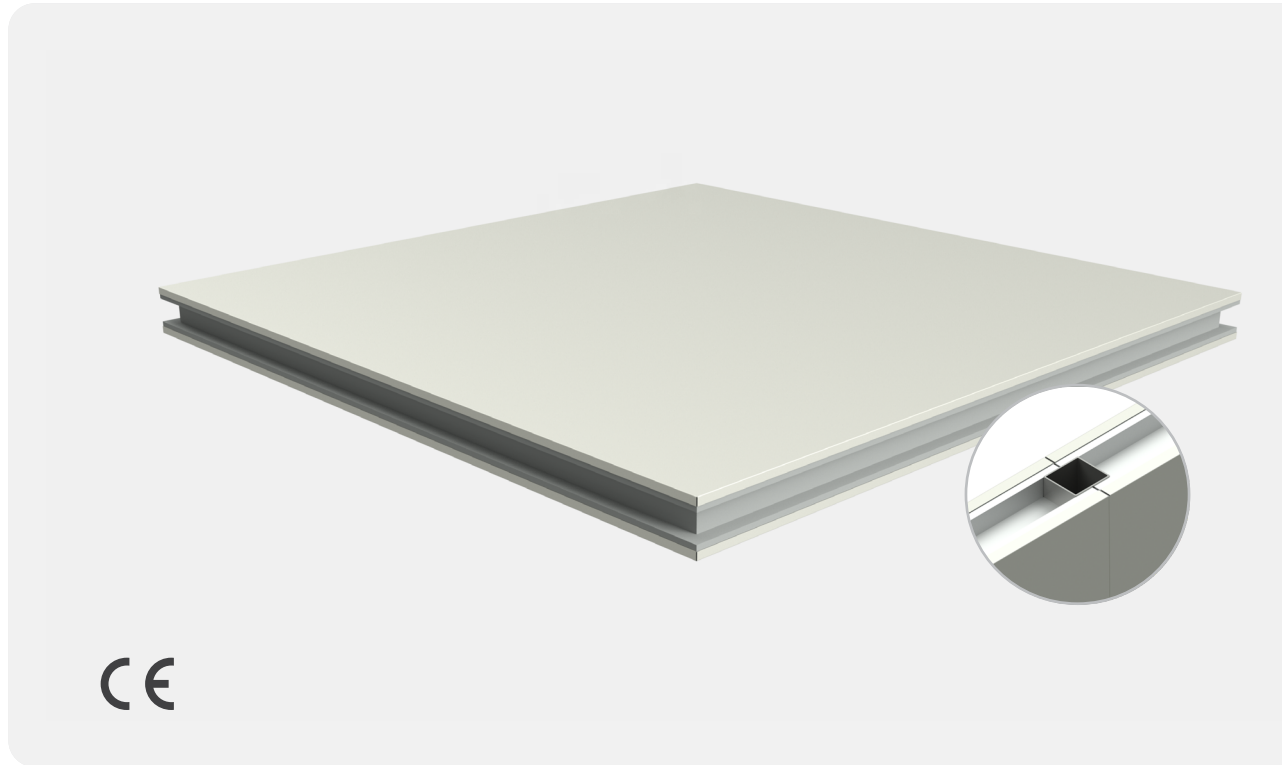


# Panel-Lab Roc Alu

Mineral wool core panel  
for white rooms



- The mineral wool core of the Panel-Lab Roc Alu insulation board is lightweight, with good compressive strength, high thermal and acoustic insulation and high durability.
- The high performance of Panel-Lab Roc Alu, such as its lightness, rigidity and durability, make it an ideal panel for the construction of walls and ceilings in white rooms.

# Panel-Lab Roc Alu

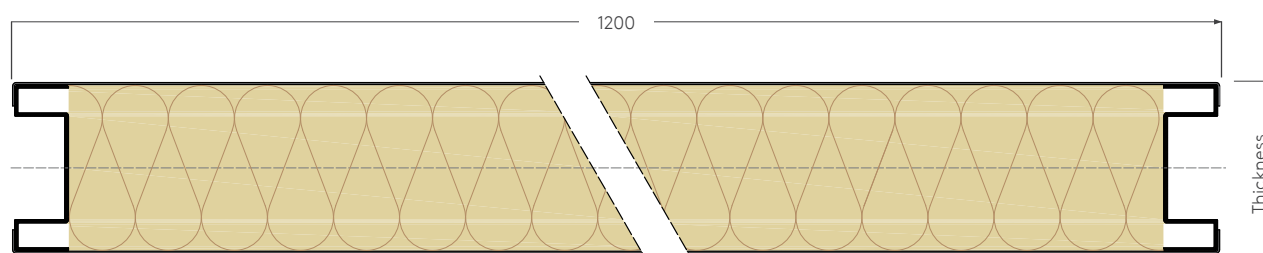


## Description and applications

- Sandwich panel with mineral wool core, with two possible densities, and steel faces between 0.5 mm and 0.6 mm.
- Wide range of highly durable coatings, adapted to the environment in which the panel will be installed.
- The panel, which incorporates an aluminium framing profile, has been designed for the construction of walls, ceilings and partitions in clean rooms, laboratories, research centres, the pharmaceutical sector, etc.



## Technical features



<b>Useful width</b>		1.200 mm			
<b>Manufacturing length</b>		0.5 to 7.0 m			
<b>Core density</b>		Mineral wool LD: 130 kg/m <sup>3</sup>   Mineral wool HD: 150 kg/m <sup>3</sup>			
<b>Panel thickness (mm)</b>		40	50	60	80
<b>Self-weight<sup>(1)</sup> (kg/ml)</b>	<b>LD Core</b>	16,92	18,38	20,05	23,45
	<b>HD Core</b>	17,82	19,52	21,43	25,29
<b>Thermal transmittance<sup>(2)</sup> (W/m<sup>2</sup>.K)</b>	<b>LD Core</b>	0,85	0,70	0,59	0,46
	<b>HD Core</b>	0,89	0,73	0,62	0,48

(1) Considering 0.5 mm thick sheets and aluminium trim on two edges.

(2) Obtained by simplified method for the calculation of the thermal transmittance of a panel, considering 0.5 mm thick sheets.

# Panel-Lab Roc Alu



## Certifications and applicable regulations

### Reaction-to-fire classification

- The Panel-Lab Roc Alu panel has the reaction to fire classification A2 - s1, d0 according to EN 13501-1:2018 (Euroclasses).

### Product certifications

- CE mark according to EN 14509:2013.



### Implementing regulations raw material

- Hot-dip galvanised sheet metal according to EN 10346 and organic coatings according to EN 10169.

## Components

### Insulating core

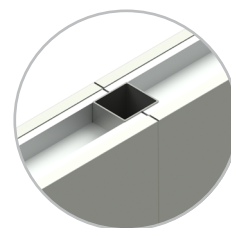
- Mineral wool with density 130 kg/m<sup>2</sup> (LD) or 150 kg/m<sup>2</sup> (HD).

### Panel facing

- Cold-formed sheet from steel coil, sheet thicknesses between 0.5 mm and 0.6 mm.

### Gasket joint

- Gasket joint, with an aluminium profile, which allows the wall or ceiling support profiles to be placed inside.



## Finishes

### Profiling option

- Flat finish.

### Coatings

- PS 25 microns, HDX 55 microns, PET 50 microns.



Download the latest version by scanning the QR code or by clicking [here](#)

Kingspan | Invespanel is a trademark of Teczone Española S.A.U., and reserves the right to modify the contents of this document without any prior warning. Every effort has been made to ensure that the content of this publication is accurate, but Teczone Española S.A.U. and its affiliated companies are not responsible for errors or information that may be misleading. Suggestions regarding the final use or application of the products or work methods are merely informative and Teczone Española S.A.U. and its affiliates do not accept any responsibility in this regard.

### Kingspan | Invespanel

Pol. Buicio, Sector 6 Nave 4  
E - 26360 Fuenmayor (La Rioja)  
T: +34 941 450 923  
E: [info@invespanel.com](mailto:info@invespanel.com)  
[www.invespanel.com](http://www.invespanel.com)

